

UPGRADE TO NEW STYLE IGNITION SWITCH

OLD STYLE IGNITION BARREL RDG21510162

NEW STYLE IGNITION BARREL (With paired keys) RDG215A5

KIT NEEDED RDG215A6

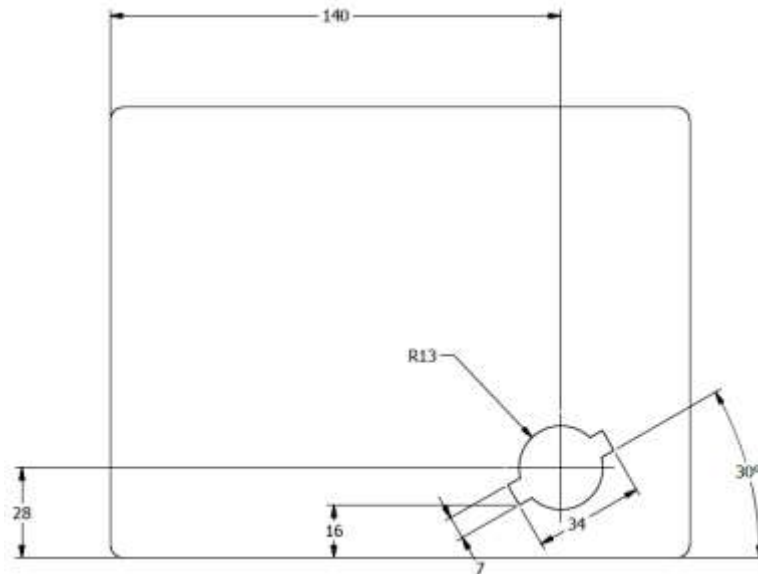
Kit Contains

- a. 1x RDG215A5 IGNITION SWITCH**
- b. 1X RDG602A4 SHIRE KEY COVER STICKER**
- c. 2X RDG129L 6.3mm QC RECEPTICLE**
- d. 1X 9.5mm QC RECEPTICLE**
- e. 1X RDG498 HEAT SHRINK ADHESIVE LINED**

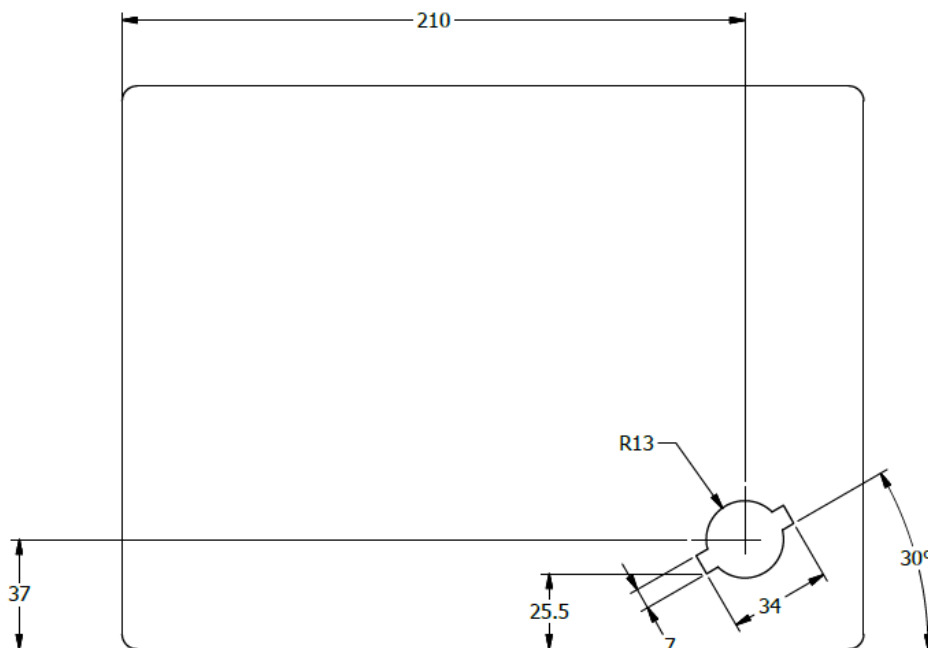
INSTRUCTIONS

- Remove the old ignition switch (RDG21510162) from the panel.
- Modify the hole for the igniton switch on the panel as per the drawings below.

Basic Panel

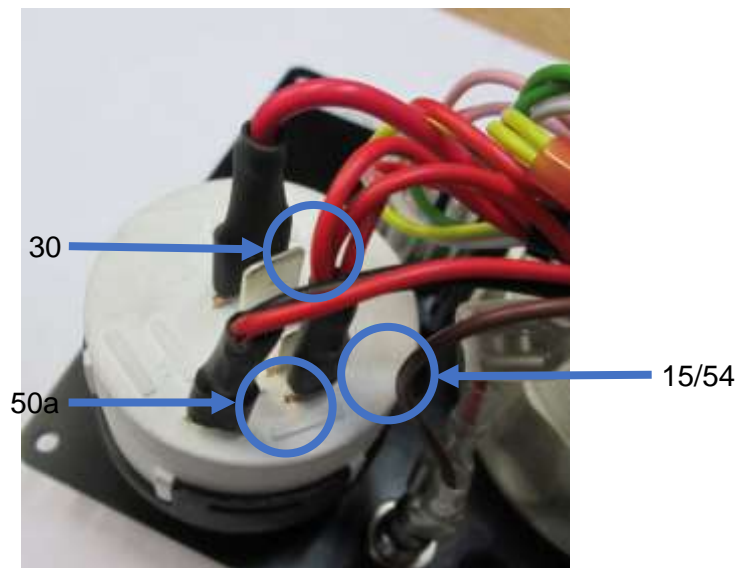


Deluxe Panel



- Fit the new Ignition Switch and Key Cover to the modified panel.
- Fit the Off/On/Start sticker above the key switch (if required).
- Remove the terminals from the following wires:
 1. Terminal with **Light Red** wire
 2. Terminal with **Three Dark Red** wires
 3. Terminal with **Black** wire **and** **Red** wire
- Fit the new Terminals to these wire:
 1. 9.5mm Receptacle fits the **Light Red** wire
 2. 6.3mm Receptacle fits the **Three Dark Red** wires
 3. 6.3mm Receptacle fits the **Black** wire **and** **Red** wire

Cut appropriate lengths of the heat shrink & put over the Receptacles. Heat up the Heat Shrink so that it wraps around the Receptacle and wires.
- Refit the wires to the new Ignition Switch terminals as per the photo below.



Terminal Number on Ignition Switch	Wire Colour/Colours
30	Light Red wire (9.5mm Receptacle)
15/54	Three Dark Red wires (6.3 Receptacle)
50a	Black wire & Red wire (6.3 Receptacle)

Parts Supplied in the Kit:

Qty	Part No	Description
1	RDG215A5	Ignition Switch & Key Cover
2	RDG129L	6.3mm QC Receptacle
1	RDG2069577	9.5mm QC Receptacle
0.5	RDG498	Heat Shrink Adhesive Lined